

COMPANY PROFILE



INNOVATIVE TECHNOLOGY
SOLUTIONS

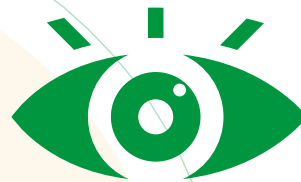
ABOUT US

We are a customer-centric technology company that delivers digital and ICT solutions to various industries. Incorporated in Botswana, Malawi, Mozambique, Namibia, South Africa, Zambia and Zimbabwe. Our Global Focus is: to provide smart technologies to enhance and support efficiencies in your business echo systems Our ethos is that: **"SMART SEAMLESS SOLUTIONS."**



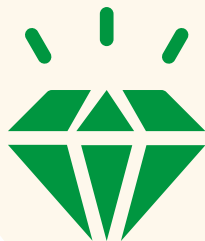
OUR MISSION

To be Africa's number one technologies company in deploying digital transformation services to optimize business performances for our clients.



OUR VISION

We are a dedicate team that delivers dynamic innovative tracking solutions, tailor-made to meet client needs; leveraging date to make smart decisions for our clients and going all out to identify root causes to solve our clients' problems.



OUR VALUES

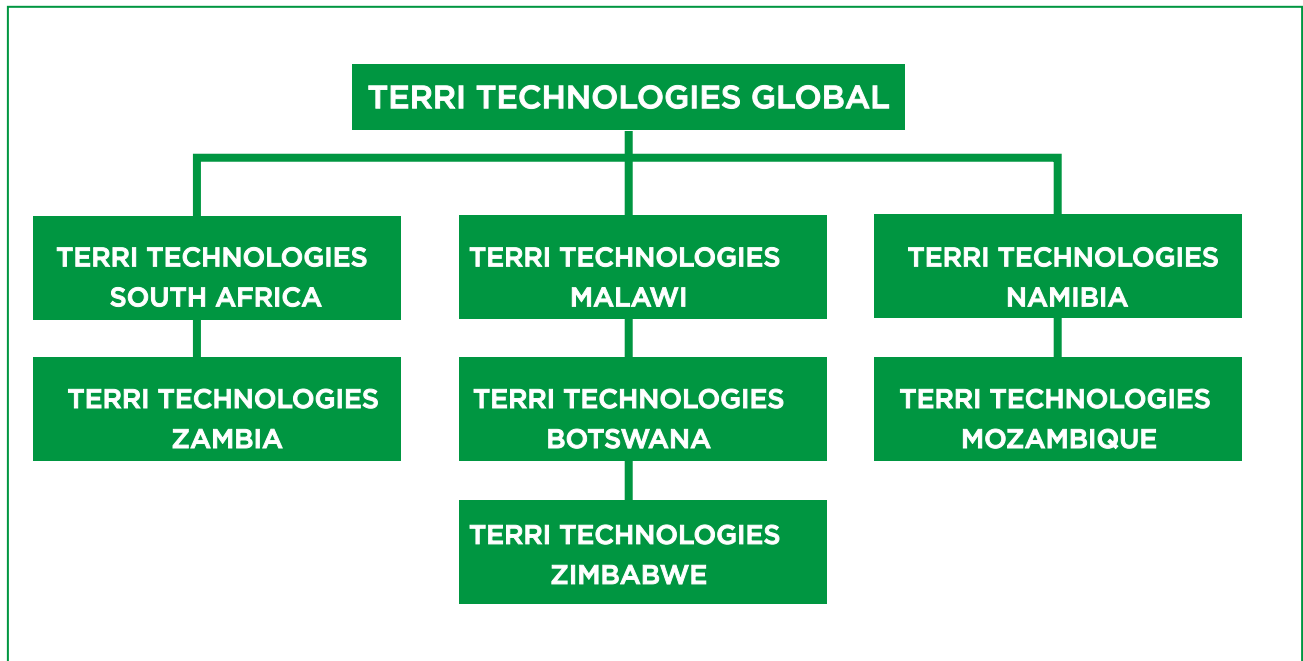
We have passion to achieve the highest attainable levels of:

- Flexibility, energetic responsiveness and dedication
- Accountability, superior results & recognition
- Integrity, in every aspect of our business and personal lives
- Mutual respect for all

OUR GLOBAL FOCUS IS -

To provide smart tracking, software solutions, solar energy and GPS management solutions across our markets

OUR STRUCTURE



THE SERVICE OFFERING TO OUR CLIENTS...

- We offer Premier Software Digital technology solutions that allows our customers' interactive capabilities – thereby giving important service delivery insights
- Robust and reliable systems that connect seamlessly to global communication networks
- We enhance productivity through real-time transactional analysis and audits of all our products
- We promote innovation and implementation of Smart Technologies, e.g.: Pay Toll Card, Banking, Insurance, Investments and Agriculture Solutions,
- We drive continuous improvement of client processes through easy scalable capabilities
- We provide additional system process efficiencies through hosting, monitoring and internal management (Terri Technologies personnel)
- We offer our clients access and real time view to easily monitor their assets through the onboarding of the tracking software system on their mobile phones and laptops in real time
- Our systems are secure and backed-up by reputable partners, regionally and internationally

OUR SOLUTIONS



SAHARA FUEL SYSTEM MANAGEMENT

Fuel Management Systems are designed to monitor and control fuel consumption within the company's tanks. Their sole aim is to measure and track fuel inventories fuel dispensation. This information is stored in systems and reported to the manager through the use of web portals to provide the useful data.

- Determine fuel storage volumes for all reserves in real-time.
- Universal payment system for all modes of payments.
- Automated water contamination detection for underground fuel tanks.
- Real-time sales analysis and reconciliation.
- Enhanced fuel auditing system.



TANK GARAGE MANAGEMENT SYSTEM:

An all-in-one solution for managing fuel tanks and garages. It optimizes fuel inventory, tracks deliveries, and monitors fuel levels in real time to prevent stockouts or overages.



FUEL SALES SYSTEM:

A comprehensive solution for automating fuel sales, integrating with point-of-sale systems to streamline transactions, track inventory, and provide detailed reporting for fuel stations.



TOLL GATE MANAGEMENT SYSTEM:

A technology-driven solution for automating toll gate operations, allowing for cashless payments, traffic flow monitoring, and revenue tracking, reducing congestion and improving service efficiency.



INTERCITY BUS PAYMENT SYSTEMS:

A secure and scalable digital payment platform for intercity bus services, allowing passengers to purchase tickets online or via mobile applications, simplifying operations and improving customer convenience.



E-LEARNING SYSTEM:

A robust online learning platform designed for educational institutions and corporations. It enables interactive learning experiences through course management, virtual classrooms, and assessments, fostering a dynamic educational environment.



DEPOSIT TAKING SYSTEM:

A secure, user-friendly system that enables financial institutions to manage customer deposits efficiently, with features like account management, transaction tracking, and real-time reporting.



IoT & GPS TRACKING:

A state-of-the-art system that utilizes Internet of Things (IoT) devices and GPS technology to track vehicles, assets, and personal devices in real time, ensuring better security, monitoring, and operational efficiency.



PERSONAL SAVING & INVESTMENT SOLUTIONS:

A comprehensive platform to help individuals manage savings and investments, offering tools for goal-setting, tracking progress, and providing insights on investment options and returns.



LAPTOP TRACKING

Always-On Protection: Gain continuous visibility and control over devices, data, applications, and users, even when offline. **Self-Healing Applications:** Absolute Resilience automatically detects and repairs critical applications, ensuring optimal performance and reducing IT workload. **Confident Risk Response:** Identify and address security threats and vulnerabilities swiftly with features like data discovery, endpoint investigation, and remote device management. **Enhanced Data Security:** Locate lost or stolen devices, and take necessary actions like data deletion to safeguard sensitive information



ASSET TRACKING SOLUTIONS

- Livestock monitoring
- Movement detection
- Vehicle tracking
- Indoor tracking
- Enhanced tamper detection
- Tracking on stop/on move
- Backup tracking
- Static navigation
- Bluetooth sensor support
- Anti-theft and backup solution
- Laptop Tracking



FLEET MANAGEMENT SOLUTIONS

To maintain an accurate and up-to-date overview of vehicle diagnostics, geolocation, and identifying risky or unsafe driver behaviours while simultaneously reducing manager workload.

- Automated trip management
- Fuel tracking and theft protection
- Geofencing route deviation alerts
- Real time alerts
- Analytics and reporting on demand
- Device agnostic/compatible across
- Expense and maintenance management
- Vehicle immobilisation
- Speed limit



SPEED GOVERNOR/LIMITER

A speed governor, also known as a speed limiter, is a device installed in vehicles to limit the maximum speed at which the vehicle can operate. Its primary purpose is to enhance road safety by preventing drivers from exceeding a certain speed limit, thus reducing the risk of accidents and improving fuel efficiency. We offer the following Precise Speed Control, Tamper Proof Operation, Detailed Data Logging and Multi-Tiered Warning System



SOLAR TECHNOLOGY SOLUTIONS BY TERRI TECHNOLOGIES

At Terri Technologies, we harness the power of the sun to offer reliable, clean, and renewable energy through our solar technology products. Designed for homes, businesses, and institutions, our solar solutions provide efficient energy systems that reduce electricity costs, lower carbon footprints, and promote environmental sustainability.

Our solar technology products include:

Solar Panels: High-efficiency photovoltaic panels that convert sunlight into electricity, optimized for various energy needs.

Solar Batteries: Advanced storage solutions that ensure energy availability during non-sunlight hours, providing power security.

Solar Inverters: Top-grade inverters that seamlessly convert solar energy into usable electricity, integrating easily with existing power systems.

Solar Monitoring Systems: State-of-the-art technology to track energy generation, consumption, and system performance in real-time.

Customized Solar Installations: Tailored solutions for specific energy demands, ensuring maximum efficiency and cost-effectiveness.

Whether it's for powering homes, businesses, or critical infrastructure, our solar technology products are built for longevity and optimal performance, backed by Terri Technologies' commitment to innovation and customer satisfaction.



MICRO LENDING SYSTEMS:

A software solution tailored for microfinance institutions, offering end-to-end loan management, from application to disbursement and repayment, while ensuring compliance with financial regulations.



LOANS MANAGEMENT SYSTEMS:

A complete solution that streamlines the loan lifecycle, from origination to collection, with integrated risk management tools and detailed reporting for both lenders and borrowers.



CORE BANKING SOLUTIONS FOR MICRO-BANKING

A modular system built for microfinance institutions to manage customer accounts, transactions, loan disbursements, and regulatory reporting, ensuring operational efficiency and customer satisfaction.



INSURANCE SYSTEMS (GENERAL, LONG-TERM, AND HEALTH INSURANCE):

Tailored solutions for the insurance industry, offering policy management, claims processing, premium collection, and customer service support for general, long-term, and health insurance sectors.

INDUSTRIES WE SERVICE



Manufacturing



Logistics



Vehicle Aggregators



Cold Chain Aggregators



Emergency



Security



Mining & Construction



Passenger Transit



Tanker



System Integrators



Banks



Telecom Operators

OUR TEAM



Dr. Ruth B. Ncube

CHIEF EXECUTIVE OFFICER, TERRI TECHNOLOGIES

Dr. Ruth B. Ncube is a distinguished business leader with over 25 years of leadership experience in high-paced, innovative environments. She has a remarkable record of delivering business strategies that exceed stakeholder expectations across sectors such as insurance, banking, and hospitality.

Known for her innovative mindset and strategic acumen, Dr. Ncube has chaired and served on numerous influential boards nationally and internationally, solidifying her status as a transformative leader. Her achievements in leadership and strategic execution have earned her multiple prestigious awards, both in Zimbabwe and abroad.

Educational Qualifications:

- PhD – A testament to her intellectual and leadership prowess.
- Master of Business Administration, Nottingham Trent University (UK) – A respected qualification that has equipped her with global business insights and leadership skills.
- Executive Development Program, Gordon Institute of Excellence (UK) – Providing her with advanced skills in strategy execution.
- Leadership Program, Wits University – Shaping her leadership approach through one of Africa's top leadership development programs.

- Several Marketing Diplomas – Adding depth to her expertise in market strategy and execution.

With this exceptional educational background and wealth of experience, Dr. Ruth Ncube continues to drive innovation and strategic leadership at Terri Technologies, ensuring the company remains a leader in its industry.



Kusile Mtunzi Hairwadzi

GROUP DIRECTOR

RA savvy, innovative, Top-Level Executive with experience leading organizations by providing expert business transformation services and cutting-edge technology solutions for multiple corporations. Ability to streamline organizational processes through the restructuring of procedures, operations, finances, customer service ratings and team productivity. She maintains an uncompromising focus on high-quality standards and bottom-line profit improvements. Excels at turning under-producing client businesses into companies that work efficiently and compete in the broader market. Champions innovative marketing strategies and execution, managing an annual budget across trade and consumer advertising, market research, promotions, sales, marketing collateral, and business development.



Reggis Virimbo

TECHNOLOGICAL AND OPERATIONS DIRECTOR

Reggis Virima plays a pivotal role as the Technological and Operations Director at Terri Technologies, overseeing the seamless integration of technology and operations to deliver successful project outcomes. With a strategic focus on innovation and efficiency, Reggis guides the implementation of complex projects, ensuring they meet both technical specifications and operational objectives. His expertise lies in aligning cutting-edge technology solutions with business processes, driving digital transformation, and optimizing operational workflows. Under his leadership, teams at Terri Technologies have consistently achieved high-performance standards, from system development to operational execution, enabling clients to experience streamlined and reliable services.

Key Responsibilities:

- Leading the implementation of technical solutions and operational strategies for all Terri Technologies projects.
- Ensuring that technology deployments align with business objectives and client needs.
- Managing cross-functional teams to achieve project milestones on time and within scope.
- Optimizing operational workflows to ensure efficiency and cost-effectiveness.



Carol Matambanadzo

CHIEF CLIENT EXPERIENCE DIRECTOR

Carol Matambanadzo is a distinguished Chief Client Experience Director, brand strategist, and marketer with over 8 years of experience spanning retail, real estate, and various other sectors. She is renowned for her ability to blend customer experience management with strategic marketing initiatives, consistently driving growth, brand loyalty, and operational excellence.

As a brand strategist, Carol has successfully led branding and marketing campaigns that elevated business profiles and connected deeply with target audiences. Her marketing acumen, combined with a sharp focus on customer engagement, has allowed her to develop holistic strategies that enhance brand visibility and strengthen market presence.

Her leadership in customer experience has enabled her to craft seamless client journeys, boost customer retention, and integrate digital innovations to modernize service delivery. With a passion for excellence and a reputation for building high-performance teams, Carol has consistently delivered results that positively impact both the customer and the bottom line.



Dr. Talon Garika
MANAGING DIRECTOR

Prof. Engineer Talon Garikayi is the current Pro-Vice Chancellor for Research, Innovation and Commercialisation at HIT. He holds a PhD. M.Eng. and BEng. (Hons) Mechatronics. He graduated with a First Class degree B.Eng(Hons) Mechatronics from CUT and a First Class MEng. Manufacturing Engineering from NUST in 2012. He holds a PhD in Mechatronics from Stellenbosch University specialising in Bionics and Artificial Intelligence and their applications in Biomedical Engineering.

He has a strong bias towards firmware and hardware designs for IT embedded systems and has worked as a Robotics and Automation Engineer for DrySys Pvt Ltd at Ford Motors, Pretoria, South Africa. Prior to his appointment he was the Director for Technology Transfer, Commercialisation and Licensing Centre at Harare Institute of Technology. Dr. Garikayi has more than 10 years industrial experience as a Certified Automation Engineer, he has developed control systems, automated processes, optimised production lines, SCADA and HMI Systems for several manufacturing and processing engineering firms including Steelmakers, Unilever, Ford Motors, Greif, Kadoma Textiles, Glendale Spinners, Zimplats, Mega Pak, Canuad Metal Box and Cottco. He is a Professional Member of the IEEE, Zimbabwe Institute of Engineers, Engineering Council of Zimbabwe and Global Engineering Teams. Dr. Garikayi is a Certified Design Thinking Methodology Expert from Hasso Plattner Institute, German. He is a trained Research and Policy formulation expert trained in India.

OUR CLIENTS





2nd Floor, Belvedere Square, Corner princess & Burton Road, Belvedere, Harare

Whats App: +263 772 376 067 **Email:** info@territechnologies.com

Web: www.territechnologies.com